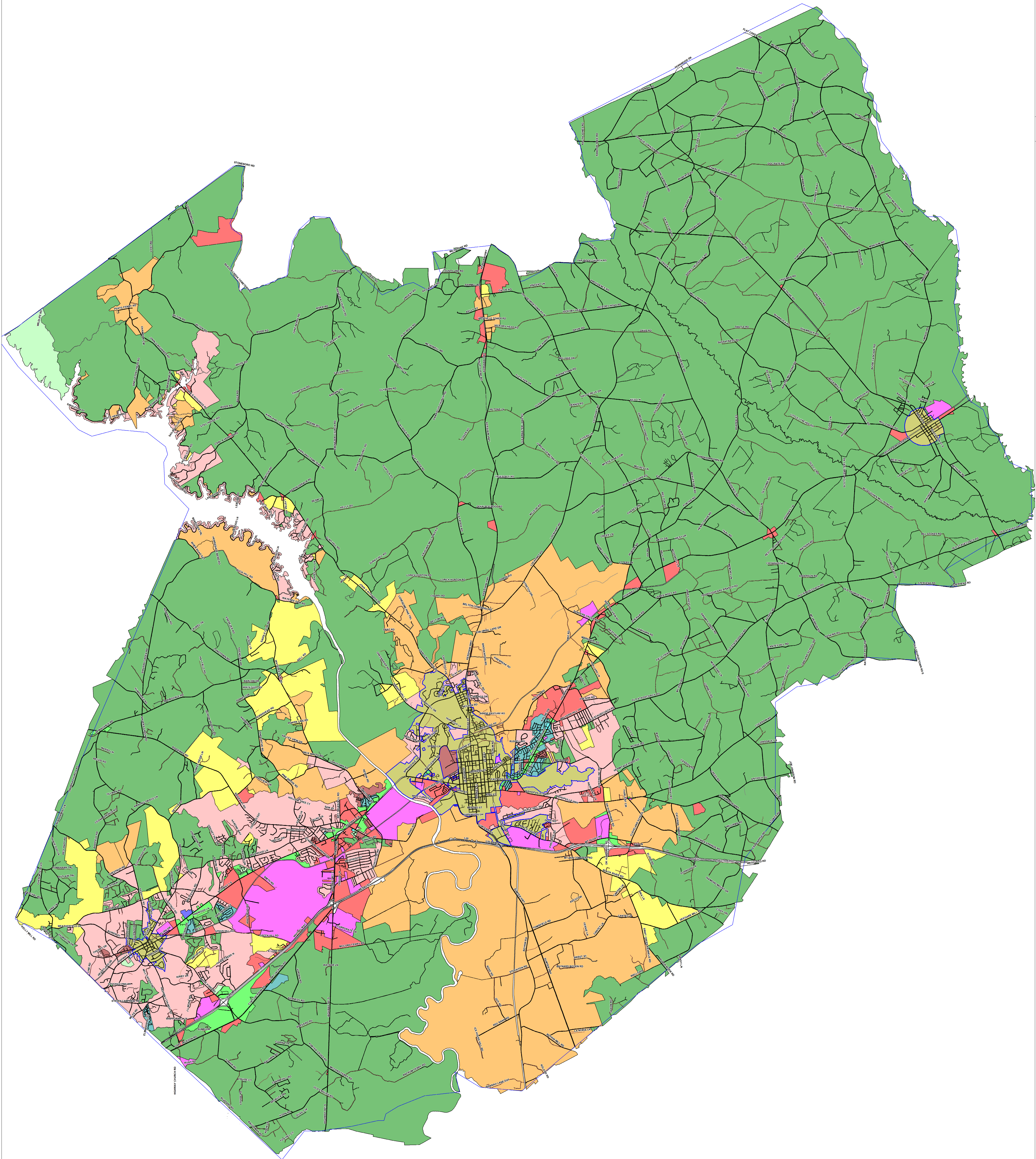
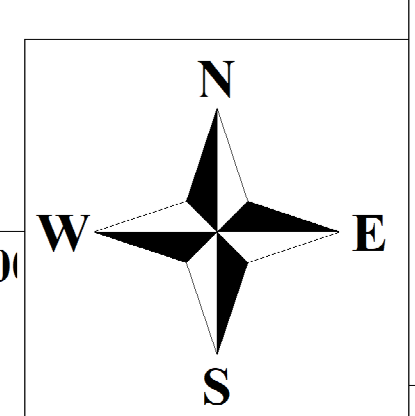
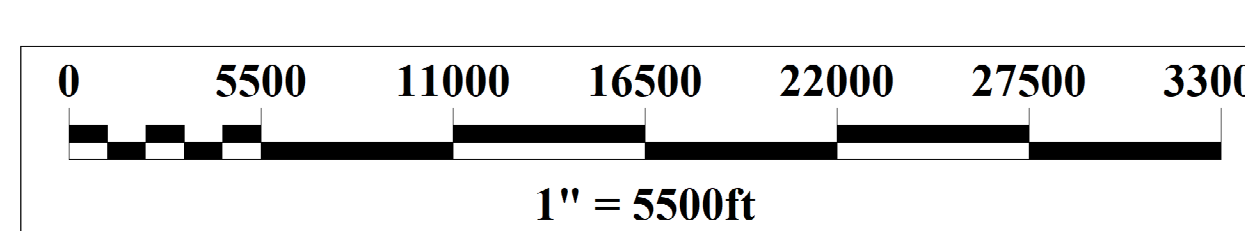


- Kershaw Zoning**
- Zoning:
- B-2
  - B-3
  - GD
  - I-1
  - MRD-1
  - MULTI
  - MUNICIPAL
  - NO VALUE
  - O-1
  - PDD
  - R-10
  - R-15
  - R-6
  - RD-1
  - RD-2
- Roads**
- Surface:
- DIRT
  - GRAVEL
  - PAVED
- County Boundary
- City Boundaries



The purpose of this map is to display the geographic location of a variety of data sources frequently updated from the Kershaw County GIS Department. Kershaw County is providing this data and does not make any warranty concerning its accuracy or merchantability. And no part of it should be used as a legal description or document.



# Kershaw County Zoning Map

